



# Canyons | Derivita Training

## Introduction to Derivita



**CANYONS**  
SCHOOL DISTRICT

# Part One: We Will Cover . . .



- [Introduction to Derivata](#)
- [Educator Dashboard](#) & [The Student Experience](#)
- [SpotCheck](#)
- [Show Work](#)
- [Content Library](#) - 35,000+ Auto-Graded Questions
- [Assignment Assembly](#)





# Why Derivita?



# Why Derivita?

---



“At Derivita, we believe technology should serve as a tool to solve challenges that you and your students are facing right now AND also meet your most critical needs in creating a successful math learning environment - regardless of modality.”

*Devlin Daley*

CEO and Cofounder

[www.derivita.com](http://www.derivita.com)



# Capabilities of Derivita



- Lower Cost, More Affordable
- Seamlessly Integrates with your LMS
- Accessible on **ANY** Device (including smartphones!)
- 35,000+ Auto-Graded Questions
- Create Your Own Questions - including Reflection and Free Response Questions!
- Homework, Quizzes, and Exams
- Students Receive **Immediate** Feedback!



# Seamless Canvas Integration



- Set-up in minutes! Immediately available for **ALL** instructors
- No separate accounts, usernames, or passwords required.
- No additional software, plugins, or extensions required.
- Create homework, quizzes, exams without leaving Canvas.
- 35,000+ auto-graded questions. Scores sync automatically.
- Set due dates & availability dates in Canvas.



Set Up Takes  
Minutes. Immediately  
Available for **All**  
instructors.



Seamless Integration  
with Canvas. No  
Separate Accounts  
Required.



Saves You Time.  
35,000+ Math  
Questions from Algebra  
to AP Calc.



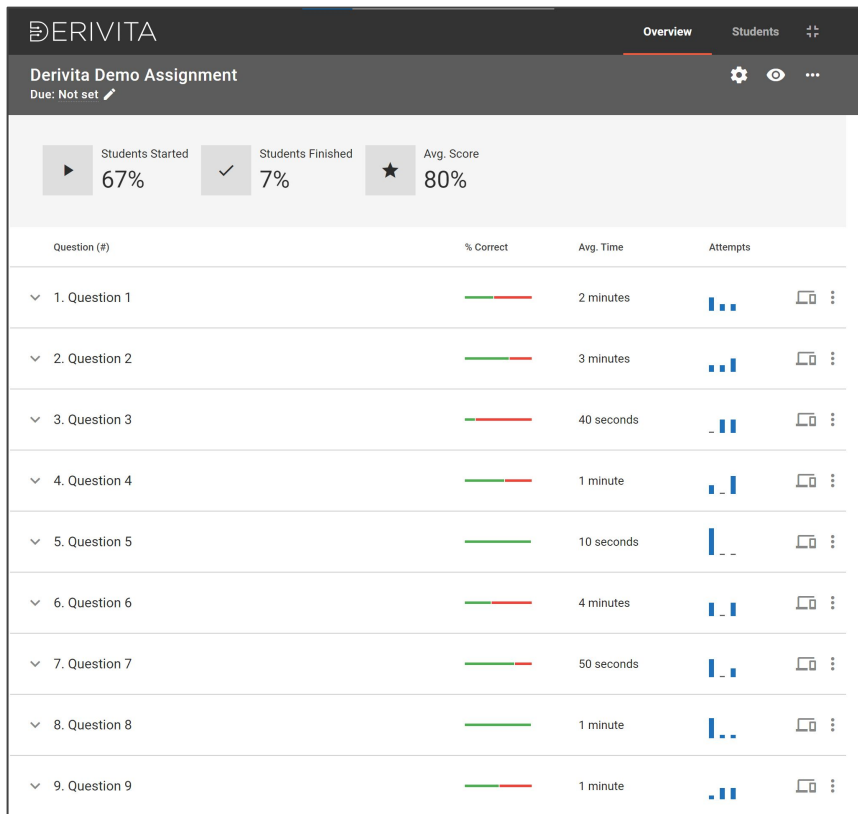
Works on **Any** Device.  
Laptops, Tablets,  
Chromebooks, and  
Smartphones.



# **Educator Dashboard & The Student Experience**



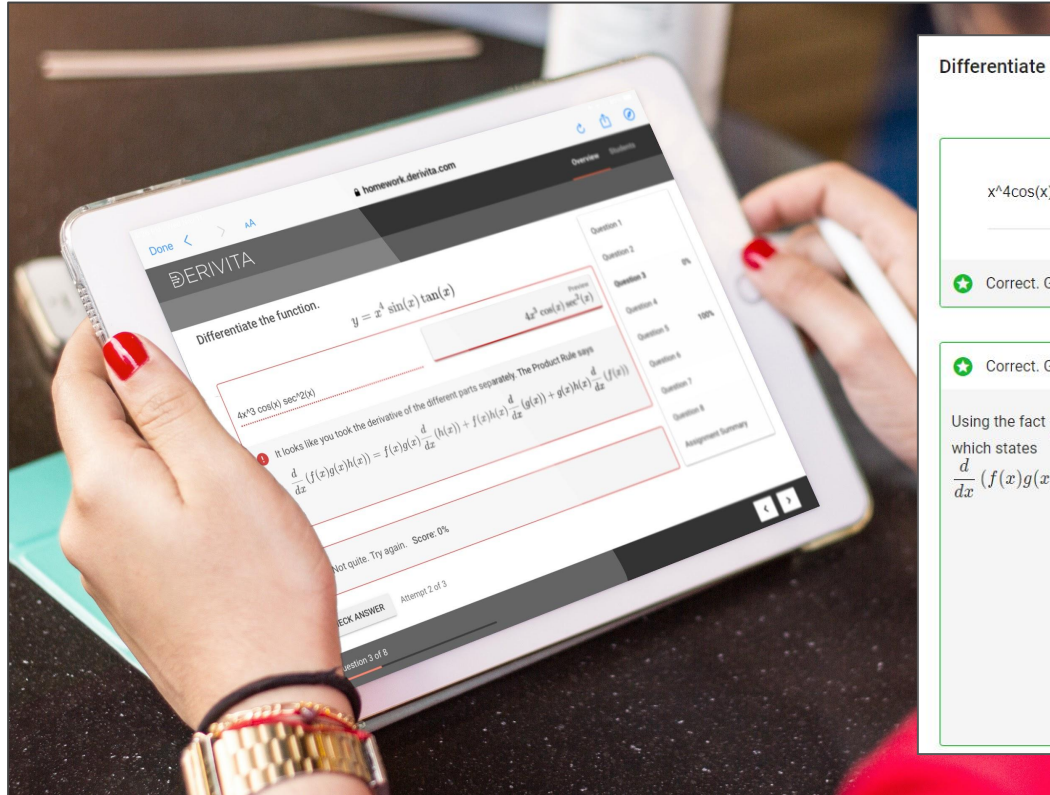
# Educator Dashboard



- View class analytics at a glance
- Quickly assess class and individual student performance
- Identify knowledge gaps
- Work problems with your students in real-time
- Launch any question as a SpotCheck to engage students and facilitate discussion



# Immediate, Targeted Feedback



Differentiate the function.

$$y = x^4 \sin(x) \tan(x)$$

$$x^4 \cos(x) \tan(x) + x^4 \sin(x) \sec^2(x) + 4x^3 \sin(x) \tan(x)$$

Preview

$$x^4 \cos(x) \tan(x) + x^4 \sin(x) \sec^2(x) + 4x^3 \sin(x) \tan(x)$$

★ Correct. Good Job!

★ Correct. Good Job! Score: 100%

Using the fact  $\frac{d}{dx}(\sin(x)) = \cos(x)$ ,  $\frac{d}{dx}(\tan(x)) = \sec^2(x)$ , the Power Rule, and an extension of the Product Rule which states

$$\frac{d}{dx}(f(x)g(x)h(x)) = f(x)g(x)\frac{d}{dx}(h(x)) + f(x)h(x)\frac{d}{dx}(g(x)) + g(x)h(x)\frac{d}{dx}(f(x)) \text{ we get}$$

$$\frac{dy}{dx} = \frac{d}{dx}(x^4 \sin(x) \tan(x))$$

$$= x^4 \sin(x) \frac{d}{dx}(\tan(x)) + x^4 \tan(x) \frac{d}{dx}(\sin(x)) + \sin(x) \tan(x) \frac{d}{dx}(x^4)$$

$$= x^4 \sin(x) \sec^2(x) + x^4 \tan(x) \cos(x) + \sin(x) \tan(x) (4x^3)$$

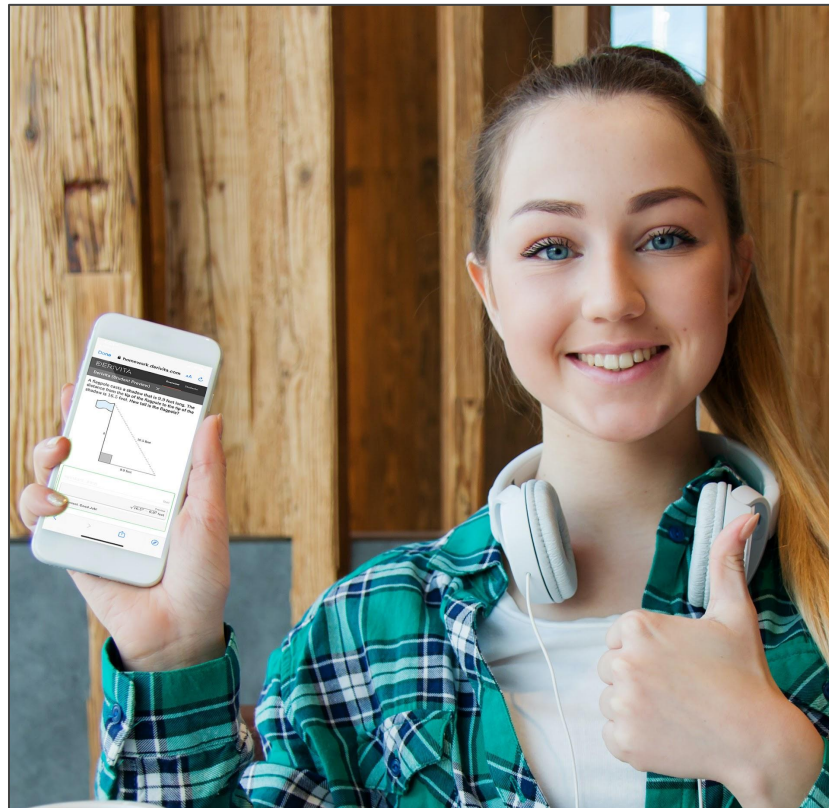
$$= x^4 \sin(x) \sec^2(x) + x^4 \sin(x) + 4x^3 \sin(x) \tan(x)$$

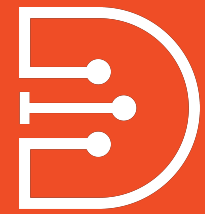
# Anytime, Anywhere, Any Device



Students can complete their assignments anytime, anywhere, and on any device including from their **smartphone**!

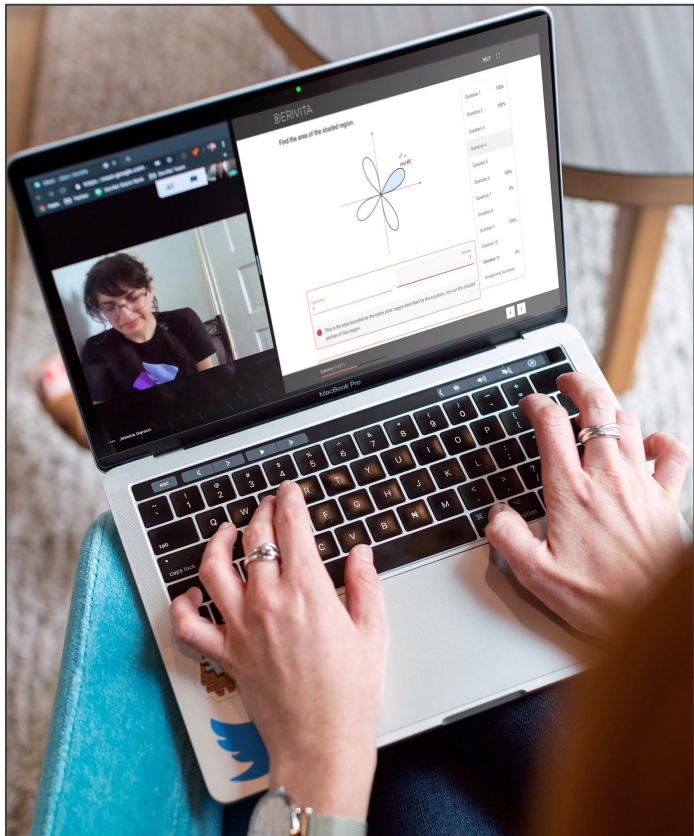
Students on phones or tablets can input their answers without the use of an external keyboard. Use [Student View](#) to experience Derivita as a student!





# SpotCheck

# Importance of Student Interaction

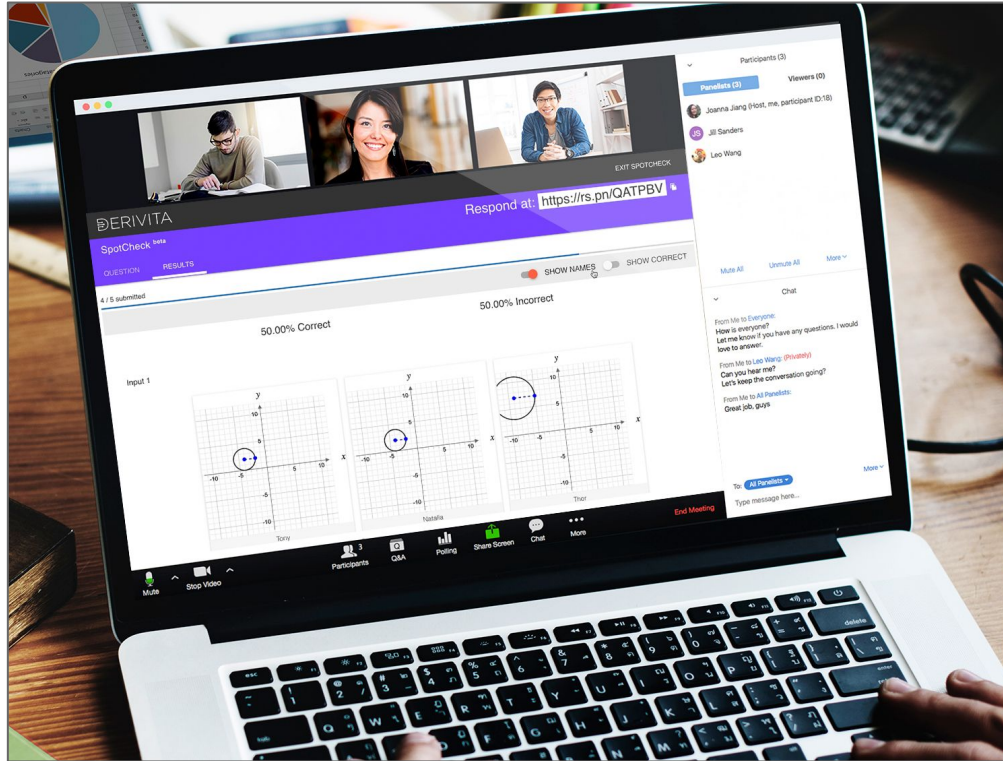


A research study from Columbia University's Teachers College showed that students who interacted more received a **full letter grade higher** than those who lacked interpersonal interaction.

Our collective goal should be to build **meaningful interactions** throughout each course: in-person, hybrid, or fully online.



# Engage Your Students with SpotCheck



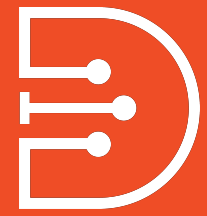
**Having Trouble Engaging Students and Encouraging Participation?**

Assess students' understanding of key topics in real time

Quickly determine knowledge gaps

Increase student participation and engagement online AND in class

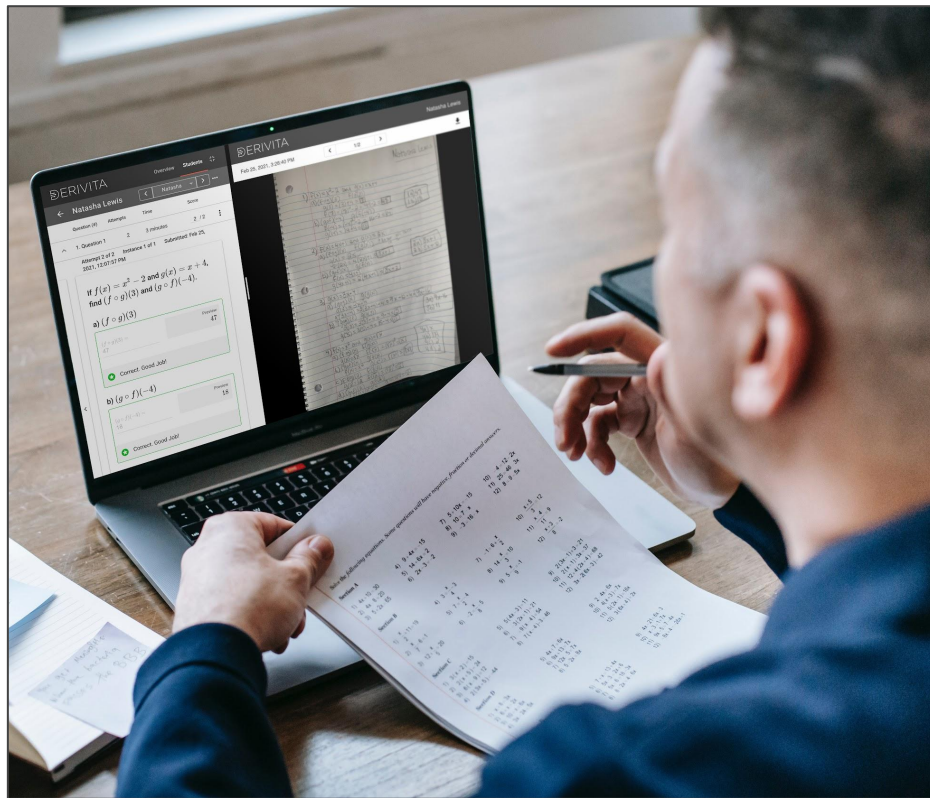
Works on ANY device - including smartphones



**Show Work**



# Show Your Work!



Spending hours grading student work?

With Derivita's [Show Work](#) feature, students can use **any** device to upload a picture of their handwritten work. You can then view students' digital assignment side-by-side with their written work, quickly switch between students, and even provide partial credit.



# **Content Library & Assignment Assembly**





# 35,000+ Questions at Your Fingertips



Integrated Math I, II, III

Algebra 1

Algebra 2

Geometry

Probability and Statistics

Quantitative Reasoning

Elementary Algebra

Intermediate Algebra

College Algebra

Trigonometry

Precalculus

AP Calculus, Calculus I-III



# Build Assignments in Minutes!



- Using [Assignment Assembly](#), you can put together assignments from the entire Derivita question library.
- Save your assignments as templates to reuse.
- Share your assignments with your colleagues!
- Create your [own questions](#) to add to your assignments.
- Use our **Question Search** to find specific topics.
- Build assignment on-the-fly to use with [SpotCheck](#).



Easily Search our [Question Library](#) to build your assignments.



Mix and match questions from the entire content library. Including your [own](#)!

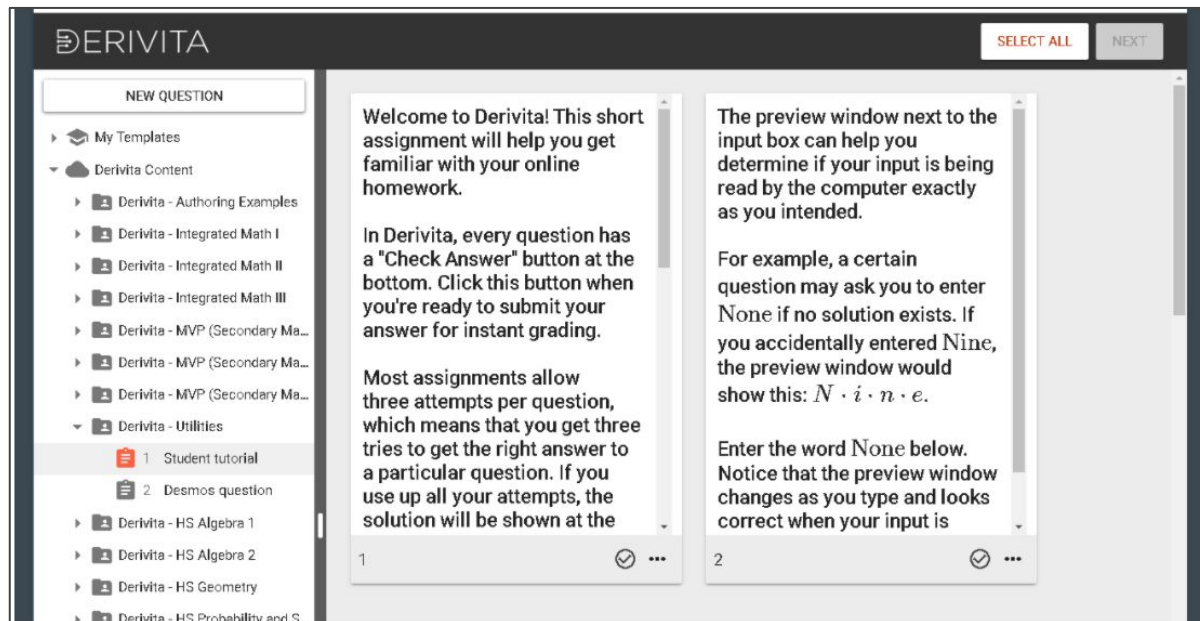


[Share assignments](#) with your colleagues or copy assignments to other courses.

# Best Practice - Student Tutorial Assignment



- Build it in [Assignment Assembly](#) under “Derivita - Utilities”
- Helps your students to get familiar with Derivita
- Shows students how to navigate the toolbar and input their answers





# Getting Started & Best Practices

# Getting Started & Best Practices



## Derivita Best Practices



### Derivita Student Tutorial Assignment

Within Assignment Assembly, you will find a [Student Tutorial assignment](#) under the "Utilities" folder. Assign this to your students to help them learn how to use Derivita.



### Experience Questions as a Student

When [building your assignments](#), you can double click on any question to try it out as a student. View feedback and worked solutions before adding it to your assignment.



### Student View to Test Assignment Settings

Once you have configured your Derivita assignments, use your LMS' or Derivita's [student view](#) (or log in as a student) to try out the assignment from the student's experience.



### Educator and Student Resources

While we are always here to help answer any questions, you and your students can also find a variety of resources available. We have both [Educator and Student Resources](#).



Get up and running in minutes!



[Short video tutorials](#) and Resources



Student Resources available [here!](#)

# Thank You!

---



**Visit Us Online At:**

[www.derivita.com/getting-started](http://www.derivita.com/getting-started)

[support@derivita.com](mailto:support@derivita.com)



@derivita



DerivitaSTEM



Derivita